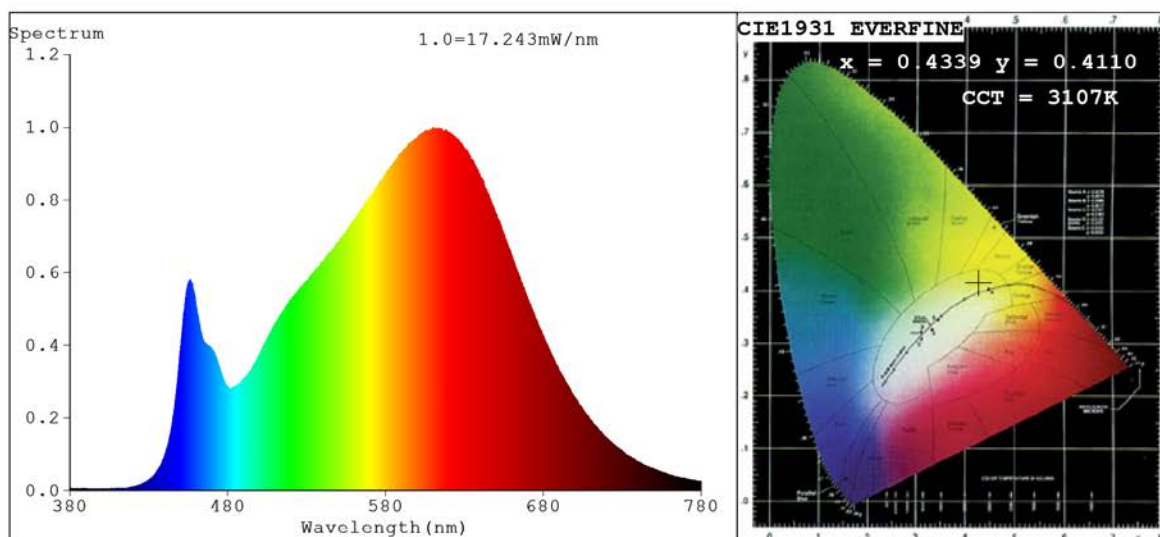


Spectrum Test Report



Color Parameters:

Chromaticity Coordinate: $x=0.4339$ $y=0.4110$ $u'=0.2457$ $v'=0.5236$
 CCT=3107K (Duv=0.0032) Dominant WL:Ld =581.3nm Purity=53.6%
 Ratio:R=22.8% G=74.1% B=3.0%; Peak WL:Lp=610.1nm FWHM=156.8nm
 Render Index:Ra=88.5 CRI=84.3 TM30:Rf=86 Rg=94 Lav=593.8nm
 R1 =88 R2 =94 R3 =98 R4 =86 R5 =87 R6 =93 R7 =89
 R8 =74 R9 =40 R10=86 R11=85 R12=71 R13=89 R14=99 R15=82

Photo Parameters:

Flux = 905.9 lm Eff. : 98.22 lm/W Fe = 2.933 W Scotopic:1297.8 S/P:1.4327

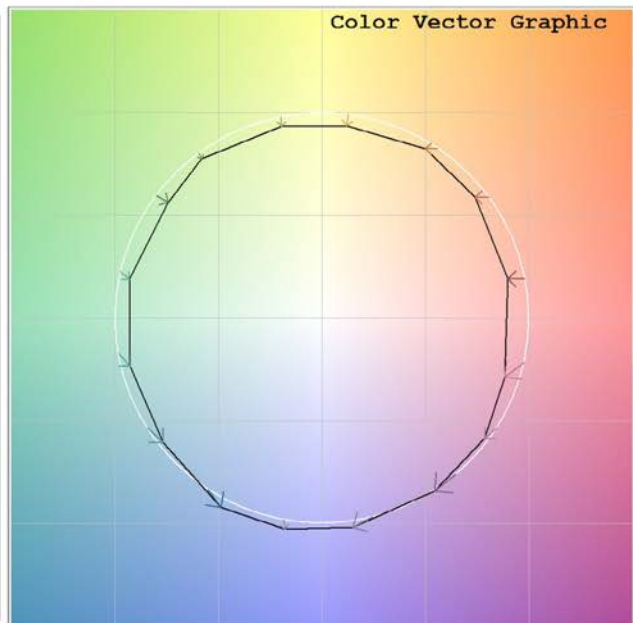
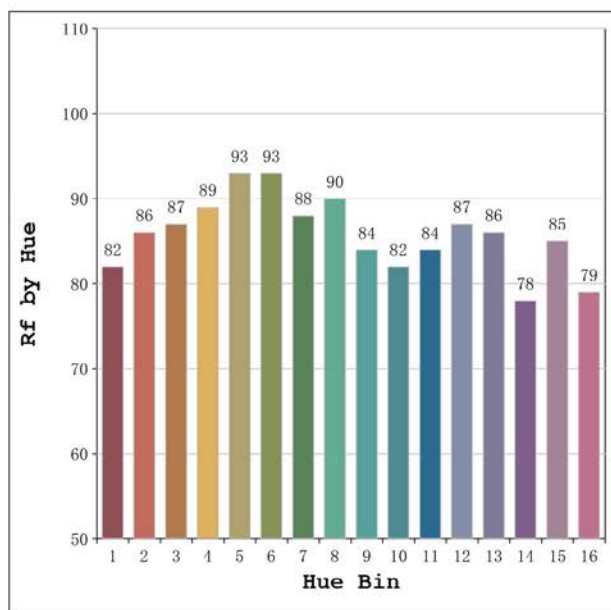
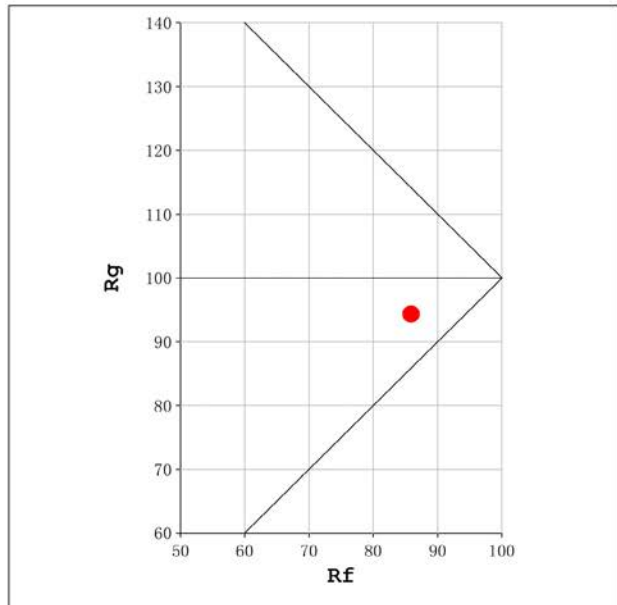
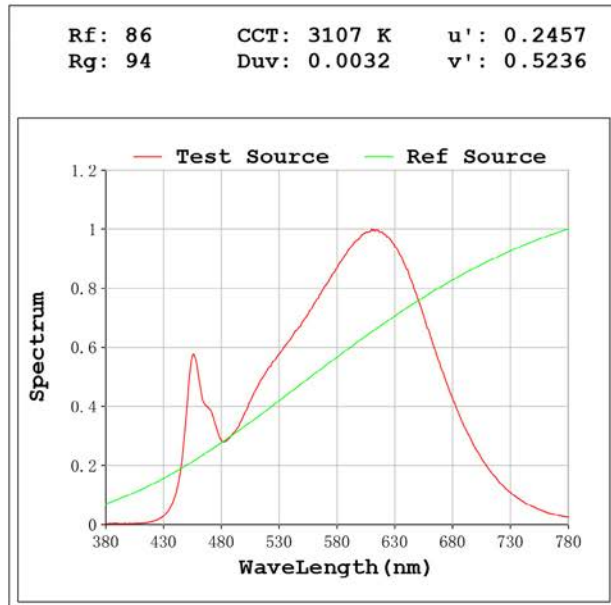
Electrical parameters:

V = 230.04 V I = 0.04409 A P = 9.223 W PF = 0.9094

Status: Integral T = 1000 ms Ip = 34951 (53%)

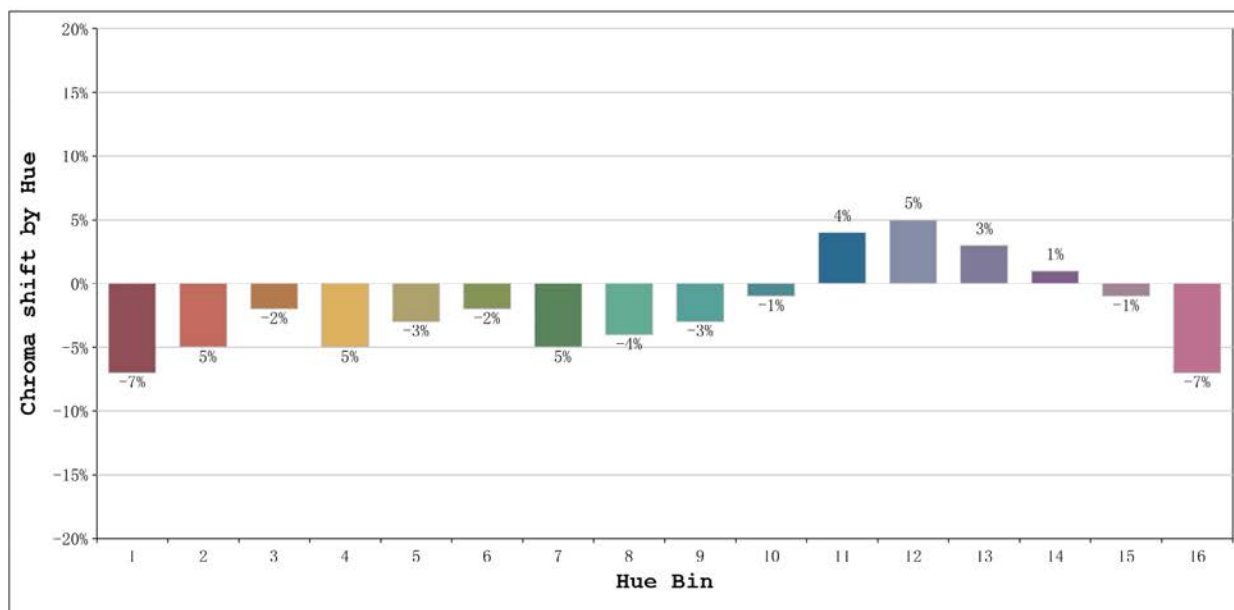
Model:Infinity 9 3000K
 Tester:Sergio Carneros
 Temperature:25Deg
 Manufacturer:Luz Negra S.L

Number: 34.031
 Date:2023-02-28 15:50:34
 Humidity:57%
 Remarks:100cm te dira flexible



Model:Infinity 9 3000K
 Tester:Sergio Carneros
 Temperature:25Deg
 Manufacturer:Luz Negra S.L

Number: 34.031
 Date:2023-02-28 15:50:34
 Humidity:57%
 Remarks:100cm te dira flexible



			Graphic shift(%)	
Hue Bin	Hue Angle	Rf	Chroma	Hue
1	0.0° - 22.5°	82	-7	2
2	22.5° - 45.0°	86	-5	3
3	45.0° - 67.5°	87	-2	5
4	67.5° - 90.0°	89	-5	0
5	90.0° - 112.5°	93	-3	1
6	112.5° - 135.0°	93	-2	0
7	135.0° - 157.5°	88	-5	0
8	157.5° - 180.0°	90	-4	3
9	180.0° - 202.5°	84	-3	7
10	202.5° - 225.0°	82	-1	10
11	225.0° - 247.5°	84	4	10
12	247.5° - 270.0°	87	5	1
13	270.0° - 292.5°	86	3	-9
14	292.5° - 315.0°	78	1	-12
15	315.0° - 337.5°	85	-1	-7
16	337.5° - 360.0°	79	-7	-8

Model:Infinity 9 3000K
 Tester:Sergio Carneros
 Temperature:25Deg
 Manufacturer:Luz Negra S.L

Number: 34.031
 Date:2023-02-28 15:50:34
 Humidity:57%
 Remarks:100cm te dira flexible